



# KANE COUNTY SUSTAINABILITY INITIATIVES

---

# KANE COUNTY

## Demographics

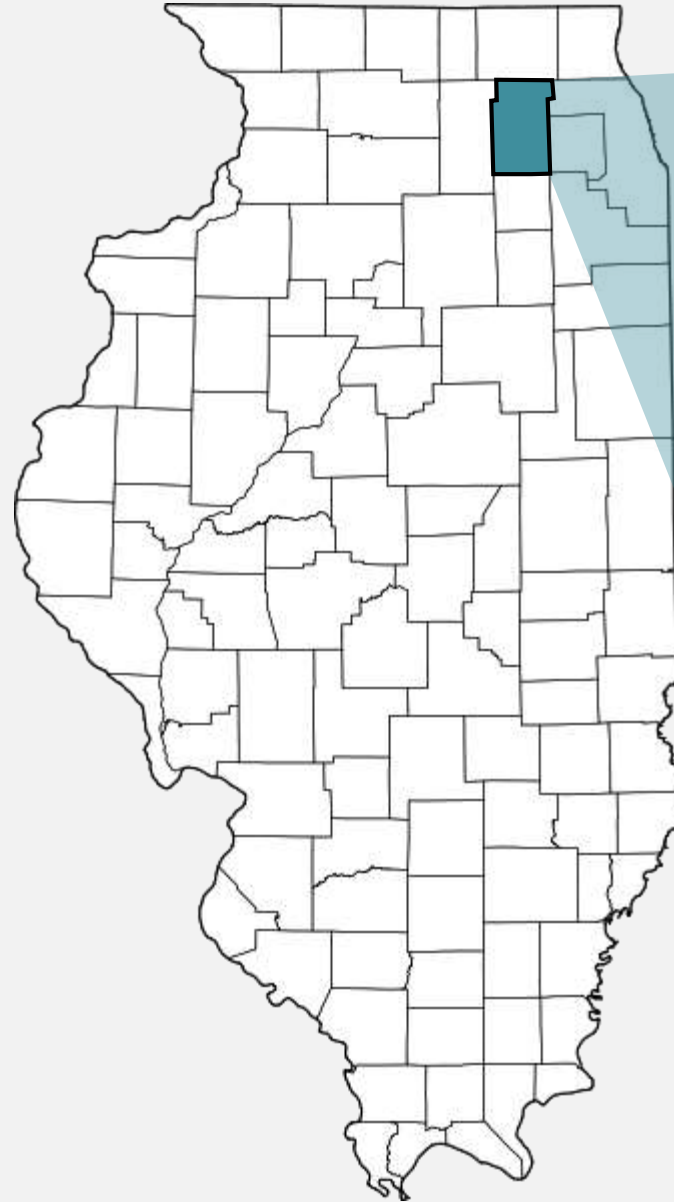
- Population: 534,667
- Largest City: Aurora (200,965)

## Transportation Network

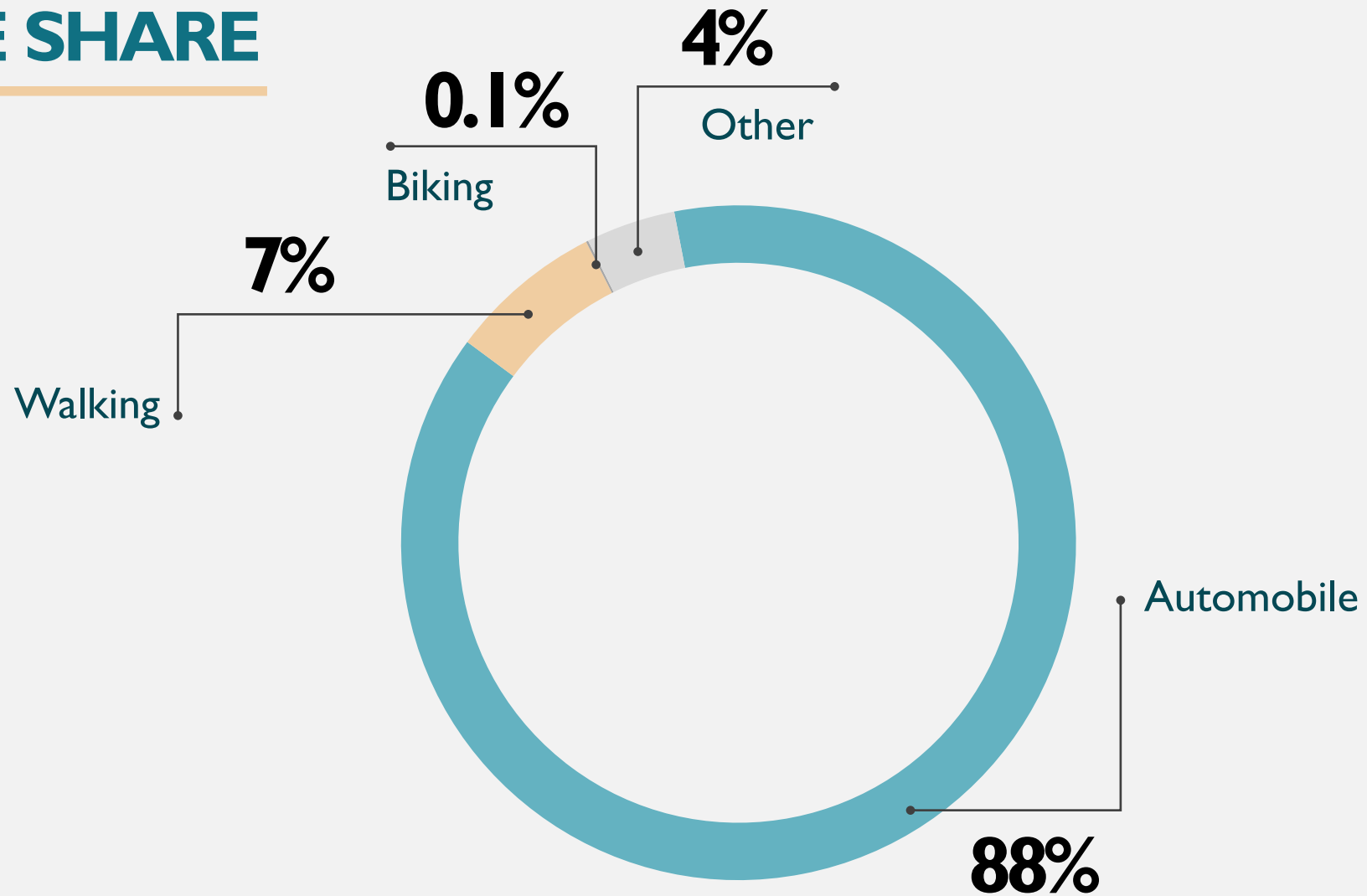
- Over 400 miles of regional and local bike trails
- Access to Metra and Pace systems

## Community Amenities

- Forest preserves and community parks
- Mix of rural/suburban/urban communities



# MODE SHARE



“Other” includes CTA Bus, CTA Train, Pace Bus, Metra Train, School Bus, and Taxi

Data provided by 2017 American Community Survey

# SUSTAINABILITY PROGRAMS

---



## Kane County Bike Sharing Network

Creation of a countywide bike sharing network that will provide an additional sustainable mode of transportation and a unique form of recreation for residents and visitors alike.



## Bike Week 2019

Week-long celebration of bicycle and pedestrian initiatives that helped to encourage municipalities to reimagine their roadways.



## KKCOM Bike & Pedestrian App

Web-based application that allows users to view a variety of different transportation-related maps, including bike trails and public transportation throughout Kane County and northern Kendall County.

# KANE COUNTY BIKE SHARING PROGRAM

- Launching 12+ station bike share system by August 2020
- Docked stations
- Program initiatives
  - Alternative purchasing options
  - Bicycle safety classes and curriculum
  - Adaptive stations



*Nice Ride*  
Minneapolis, MN

# KANE COUNTY BIKE SHARING PROGRAM

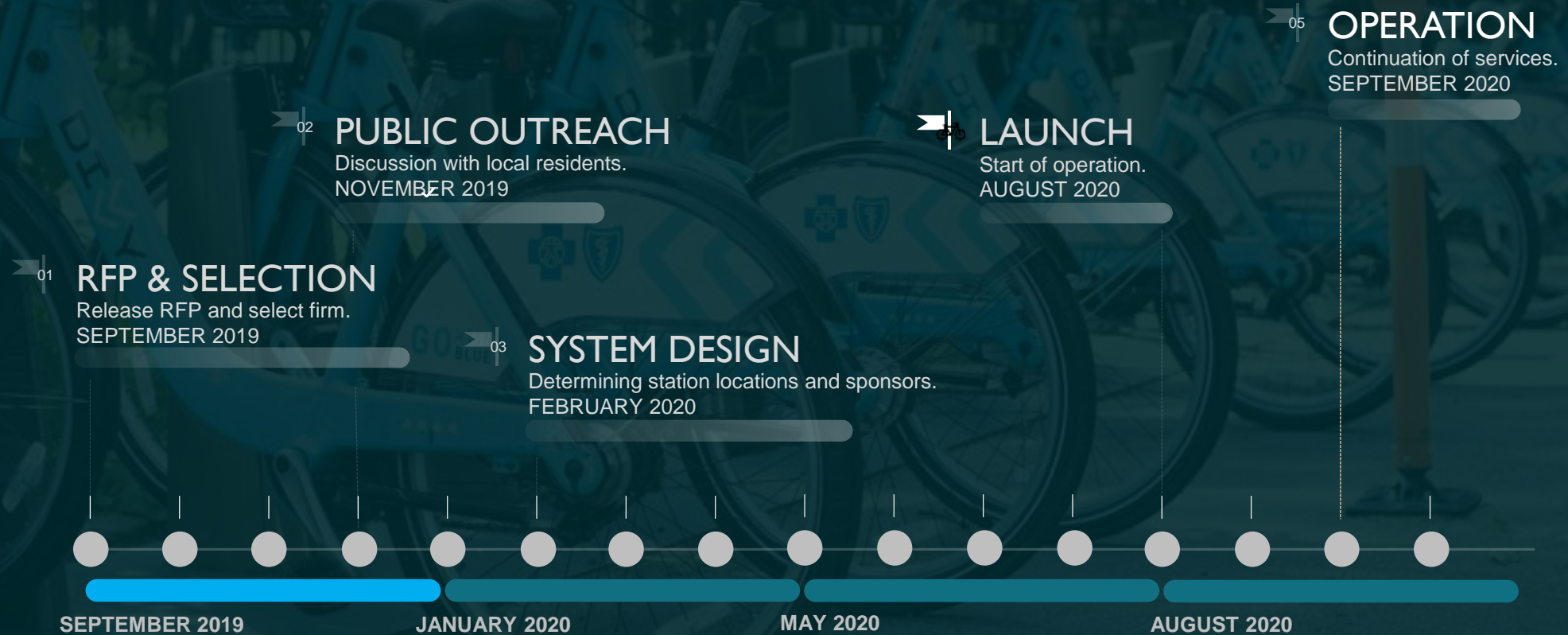
---

- Benefits

- Decreases the amount of emissions produced by automobile travel
- Healthy, inexpensive form of recreation.
- Helps create equity within communities.
- High farebox return rates.
- Bicyclists put far less strain on roads.
- Can help to greatly decrease congestion.

# KEY TIMELINE GOALS

## KANE COUNTY BIKE SHARE



# BIKEWEEK 2019

- Countywide event sponsored by municipalities, and organizations
- Coincided with Bike-to-Work Week 2019
- Many events/activities hosted during the week
  - Protected bike lane demonstrations
  - Permanent sharrows
  - Bike to Work Day events
  - Historical bike tours
  - Adaptive bicycle testing

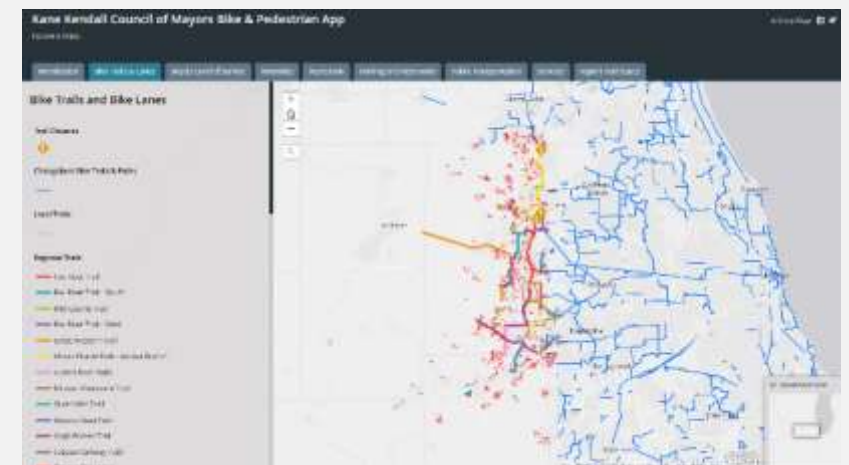
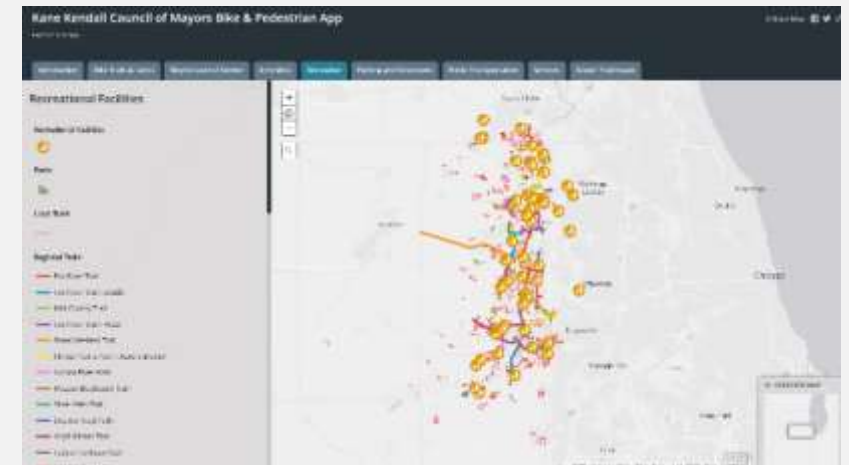


*Batavia Bike Sharrows*  
Mark Foster, Shaw Media



# KKCOM BIKE & PEDESTRIAN APP

- Online app allows users to access maps of bicycle/pedestrian trails, transit, safety, and amenities
  - Bike trails/lanes
  - Bicycle Level of Service
  - Local amenities
  - Recreational facilities
  - Public transportation
  - Public services
- Allows users to become more knowledgeable and use system safely



Explore & Enjoy.

# KKCOM BIKE & PED. APP

[Bitly.com/kkcomapp](https://bitly.com/kkcomapp)

- Introduction
- Bike Trails & Lanes**
- Bicycle Level of Service
- Amenities
- Recreation
- Parking and Restrooms
- Public

## Bike Trails and Bike Lanes

### Trail Closures



### Chicagoland Bike Trails & Paths

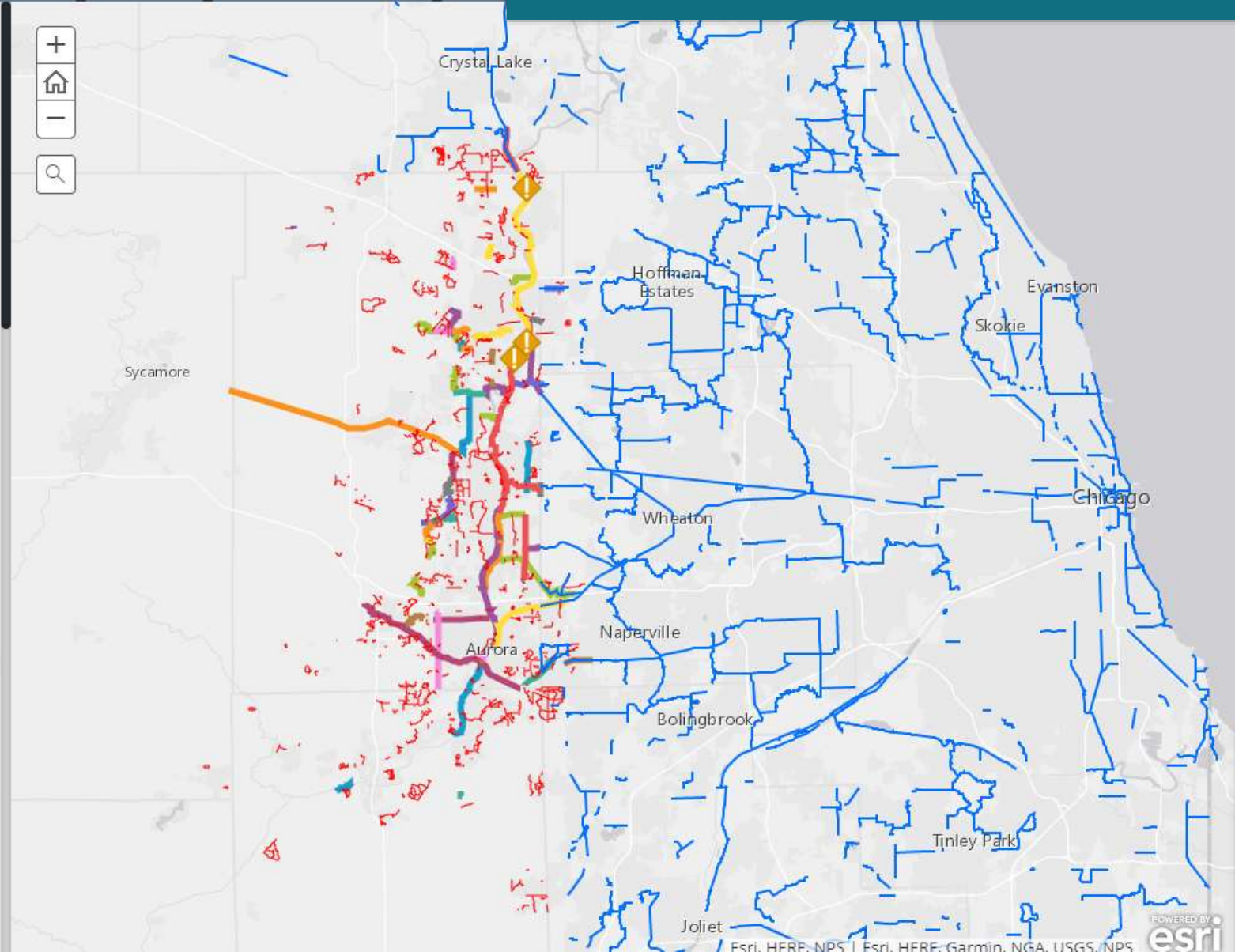


### Local Trails



### Regional Trails

- Fox River Trail
- Fox River Trail - South
- Mid-County Trail
- Fox River Trail - West
- Great Western Trail
- Illinois Prairie Path - Aurora Branch
- Aurora River Walk
- McLean Boulevard Trail
- Silver Glen Trail
- Stearns Road Path
- Virgil Gilman Trail
- Fabyan Parkway Path
- Conasa Connector



OVERVIEW MAP



# KKCOM BIKE & PED. APP

[Bitly.com/kkcomapp](https://bitly.com/kkcomapp)

- Introduction
- Bike Trails & Lanes
- Bicycle Level of Service
- Amenities
- Recreation
- Parking and Restrooms
- Public Transportation

## Recreational Facilities

### Recreational Facilities



### Parks

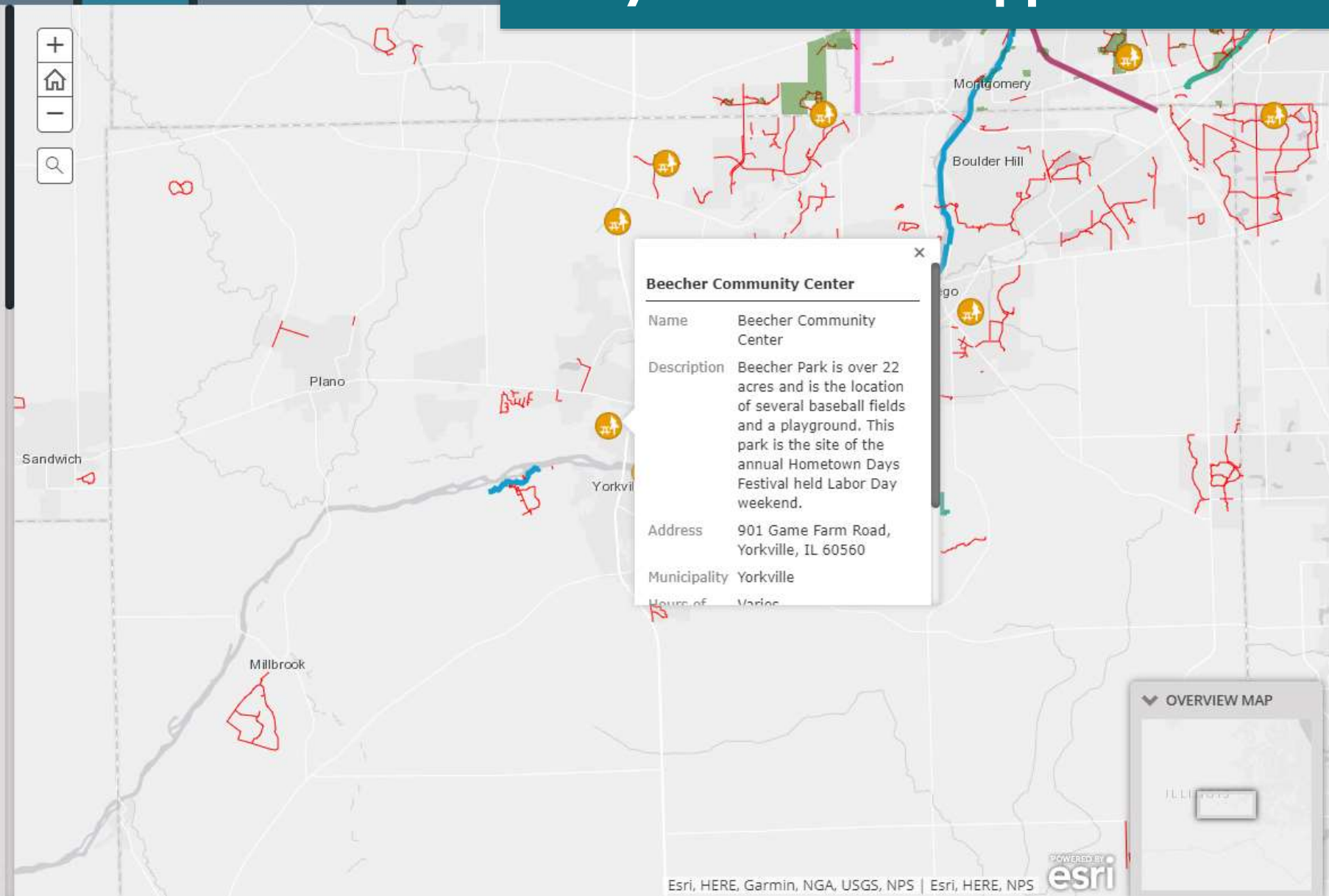


### Local Trails



### Regional Trails

- Fox River Trail
- Fox River Trail - South
- Mid-County Trail
- Fox River Trail - West
- Great Western Trail
- Illinois Prairie Path - Aurora Branch
- Aurora River Walk
- McLean Boulevard Trail
- Silver Glen Trail
- Stearns Road Path
- Virgil Gilman Trail
- Fabyan Parkway Path
- Geneva Connector



# THANK YOU

---



**Ryan Peterson**

TRANSPORTATION PLANNER/BICYCLE & PEDESTRIAN COORDINATOR



[peteronryan@co.kane.il.us](mailto:peteronryan@co.kane.il.us)



630-444-3143