

Kane County Recycles

RETHINK, reduce, reuse &
Recycle Right!



May 23rd, 2019

Fox Valley Sustainability Network

Jennifer Jarland, Kane County Recycling Coordinator

Contents of presentation

- Recycling Crisis of 2018
- Rethink, Reduce, Reuse, Recycle, Compost
- Guidelines – DOs, DON'Ts, and details
- Beyond the Bin – Resource Recovery
- 2019 Event Dates (and drop-offs)
- Household Hazardous Waste (HHW)
- KCR Green Guide, KC Connects, pass it on!
- Questions & Answers

Recycling Sea Change

- Chinese National Sword - New law in 2018, cutting off end-market for US recyclable material, and creating a crisis
- Illinois Task Force for Recycling Contamination Reduction



Waste not Want not

R
e
d
u
c
e

R
e
u
s
e

R
e
c
y
c
l
e

RETHINK

And Compost!

Clarifying the Recycling Guidelines

We have reformatted the Guidelines to make them easier for more people.

Don't be discouraged by past mistakes, these guidelines will help us all do better!

Your actions really do make a difference! Thank you for your efforts to Recycle Right!

RECYCLING GUIDELINES

YES!

Clean & Empty
Replace lids & caps
Put material in loose - Not in bags

METAL
Steel & Aluminum Containers and Foil

PAPER
Cardboard (flattened), Office Paper, Newspaper, Magazines

GLASS
Containers: Bottles & Jars Only

PLASTIC
Containers: Bottles, Tubs, Jugs, and Jars Only

CARTONS

NO!

**No Plastic Bags
No Plastic Wrap**
(return clean to retailer)

No Big Items (Electronics, Wood, Propane Tanks, Scrap Metal or Styrofoam – see countyofkane.org/recycling for other recycling options)

No Tangles (Hangers, Hoses, Wire, Cords, Ropes or Chains)

No Clothing
Textiles or Shoes (donate)

No Food, Liquid, Diapers, Batteries or Needles

No Shredded Paper
(see countyofkane.org/recycling for other recycling options)

These Guidelines represent the common items accepted in most recycling programs in Illinois. For greater detail on specific items or programmatic variations, reach out to your local authority.

To find out more detail, including recycling and reuse programs beyond the bin, visit countyofkane.org/recycling, or contact recycle@countyofkane.org or 630-208-3841. Also see the EPA online resource at <https://www2.illinois.gov/epa/topica/waste-management/Pages/recycling.aspx>

KANE COUNTY
RECYCLES

More detail on Recycling Guidelines

See full fine print details on website at

<http://www.countyofkane.org/Recycling/Pages/curbsideguidelines.aspx>

CONTAINERS

ALUMINUM CANS AND FOIL

- Aluminum cans (please empty, do not crush or flatten)
- Aluminum foil (ball clean foil to 2 inches or larger, no flat foil or small balled up foil)
- Pie plates & trays (must be free of food)

CARTONS

- Food and Drink Cartons
- Milk, Soup, and Juice cartons and boxes (please empty and rinse, do not crush or flatten, plastic nozzles, caps and tabs can be left on)
- See a [great flyer](#) on the carton recycling process

STEEL/TIN CANS

- Food cans and lids (please empty and rinse, labels can be left on)
- Metal paint cans and lids (must be empty and dry, some dried paint residue is fine)
- Metal lids are recyclable
- **NO** utensils, propane tanks, wire hangers, or small appliances

GLASS BOTTLES AND JARS

- All colors are accepted (please empty and rinse, labels and lids can be left on, avoid breaking the glass)
- **NO** window or auto glass, bakeware, ceramics, mirrors, light bulbs, coffee pots or drinking glasses

PLASTIC CONTAINERS

- **Please recycle ONLY Bottles, Tubs, Jugs, and Jars - regardless of the number.**
- **BOTTLES** (i.e. empty water, soda, juice bottles, empty laundry detergent, soap and shampoo bottles, empty health and beauty products and cleaner bottles) Replace plastic screw top caps on empty plastic bottles.
- **TUBS** (i.e. empty coffee, tofu, cottage cheese, yogurt, margarine tubs, fruit or lettuce boxes)
- **JUGS** (i.e. empty milk and juice jugs)
- **JARS** (ie. empty mayo and peanut butter jars) Replace plastic screw top lids on empty plastic jars.
- **NO** plastic bags (do not put in the curbside bin, see [Plastic Bag Recycling](#) page)
- **NO** plastic film (plastic wraps, sandwich bags, freezer bags, tarps)(do not put in the curbside bin, see [Plastic Bag Recycling](#) page)
- **NO** plastic utensils or plates (plastic wraps, sandwich bags, freezer bags,

- **NO** plastic cups, lids or straws
- **NO** black plastic
- **NO** plastic toys or hard plastic packaging
- **NO** candy wrappers, cereal bags, potato chip bags, or snack bags
- **NO** empty motor oil, pesticide, or chemical bottles
- **NO** Styrofoam, polystyrene (do not put in curbside bin, but deliver to Dart Container Corp, 310 Evergreen Dr., North Aurora,630-896-4631, Recycle Drop-Off is open 24/7. Dart accepts: foam blocks, clean food containers. **NO** straws, cup lids, paper, or packing peanuts. UPS stores will reuse clean, bagged and unmixed foam peanuts.)

PAPER

- Newspaper and inserts
- Magazines, catalogs, and phone books
- Office paper, notebooks (staples are okay, remove all metal clips and spirals and throw in trash), computer print outs, hanging file folders (remove metal and trash it), pastel colored sticky notes (no fluorescent), glossy brochures, index cards, greeting cards, stationary, fax paper, manila folders and envelopes (cellophane windows are ok to leave in)
- Junk mail (please remove all non-paper: plastic cards, magnets, etc)
- Chipboard/paperboard - cereal, cracker, tissue, shoe, gift, and 6/12-pack boxes, paper towel tubes, and egg cartons
- Cardboard boxes must be flattened and cut to 3'x3'
- Brown paper grocery bags
- Paperback books (no hardcover books)
- **NO** used paper plates or pizza boxes, or fluorescent paper (they contaminate the paper stream with food, dye, or plastic coating) If pizza box top is clean you can tear it off and recycle it.
- **NO** paper towels, tissues, or napkins, which are not recyclable because the fibers are too small to reuse (please compost them with kitchen food scraps if possible)
- **NO** Shredded Paper - Loose shredded paper causes major sorting problems in the Recycling Facility, so please save your documents for a [shred event](#) or best practice is to tear off the confidential portion and recycle the rest of the sheet whole.
- **NO** frozen food boxes, which are made of a hybrid of paper and plastic, and are not wanted by paper mills.
- **NO** paper cups, which are also made of a hybrid of paper and plastic rendering them unrecyclable

YES!

Recycle!

Clean & Empty

Replace lids & caps

**Put material in loose
- Not in bags**



PAPER

Cardboard (flattened),
Office Paper, Newspaper, Magazines



METAL

Steel & Aluminum Containers and Foil



PLASTIC

Containers: Bottles, Tubs, Jugs,
and Jars Only



GLASS

Containers: Bottles & Jars Only



CARTONS

Plastic **Bottles, Tubs,
Jugs, & Jars** only –
forget the numbers!

NO!

DO NOT Recycle!



**No Plastic Bags
No Plastic Wrap**
(return clean to retailer)



No Big Items (Electronics, Wood, Propane Tanks, Scrap Metal or Styrofoam – see countyofkane.org/recycling for other recycling options)



No Shredded Paper
(see countyofkane.org/recycling for other recycling options)



No Tanglers (Hangers, Hoses, Wire, Cords, Ropes or Chains)



No Clothing
Textiles or Shoes (donate)



No Food, Liquid, Diapers, Batteries or Needles

Resource Recovery

There are opportunities for recycling a lot of items beyond the curb!

- **Electronics, Hazardous Waste, Latex Paint**
- **Styrofoam**
- **Scrap Metal**
- **Clothes and textiles**
- **Plastic Bags and Plastic film**
- **Pharmaceuticals/Sharps**
- **Fluorescent Light bulbs**

Please see the A-Z list in the Kane County Recycles Green Guide & website!

2019 Event Schedule

Annual Recycling Extravaganza

Events at 540 Randall, on 2nd Saturdays, 8am-12noon

~~April 13~~ — electronics, books

~~May 11~~ — electronics, books + shred + paint

June 8 — electronics, books + shred

> July 13 — electronics, books + paint (NO SHRED) +
bikes, foam, batteries, bulbs, textiles

Aug 10 — electronics, books + shred

Sept 14 — electronics, books + shred + paint

Additional events, location yet to be determined

Oct 12 — electronics & books – IMSA, Aurora

Nov 9 — electronics & books – Anderson Park,
Campton Twp

Electronics Drop-offs



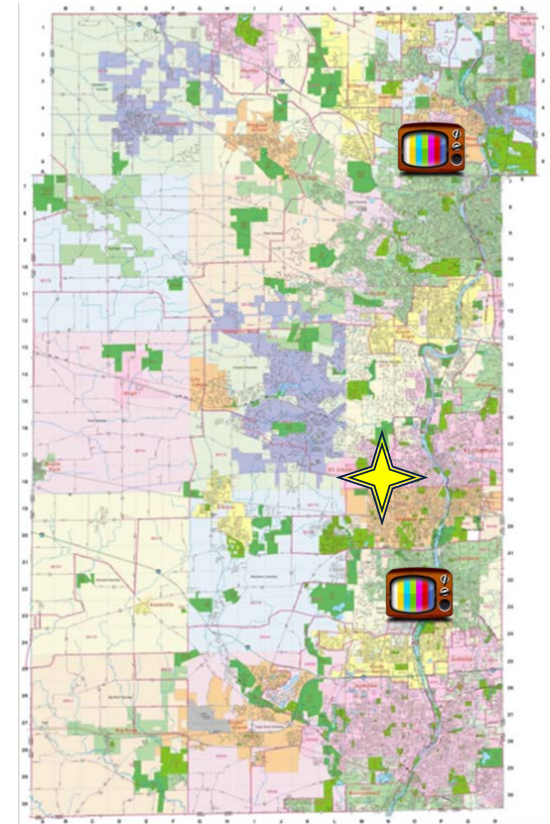
Weekday drop-off locations

Village of West Dundee Public Works

- 900 Angle Tarn, West Dundee, IL 60118
- M - F 7am – 3pm

Fabyan Parkway Site

- 517 E. Fabyan Pkwy, Batavia, IL 60510
- M - F 8am – 4pm



Collection events

One-Day HHW Event

Household Hazardous Waste (HHW) Event

What: Free Residential HHW Collection Event

When: Saturday, June 1st, 2019 / 8am – 3pm

Where: 620 Route 25, East Dundee, IL 60118

@ the former Wal-Mart, SE corner of Route 25 & Route 72



Illinois Environmental
Protection Agency

- Event is free and open to residents of Illinois. Business, Institution & Agriculture waste will NOT be accepted.
- Please **consider carpooling** with neighbors to bring your hazardous waste materials for safe disposal.
- Please make sure all waste materials are clearly labeled and safely packaged & please stay in your vehicle at event.
- Do not bring any of the items on the NOT Accepted list as we cannot take them and it slows down the line. For alternative solutions for those items, call 630-208-3841 or go to: www.countyofkane.org/recycling A-Z list.

Kane County Recycles Green Guide

Please call me if you would like to be on the annual mailing list to receive this guide each January when it comes out.

630-208-3841

Or email me at recycle@countyofkane.org

Kane County Recycles Office: recycle@countyofkane.org • 630-208-3841

Minimize Waste and Recycle Right!

2018 Event Dates:
 Jan 13 - Electronics and Books
 Apr 14 - Doc Shred, Paint
 May 12 - Electronics and Books
 Jul 14 - EXTRAVAGANZA (no Doc Shred)
 Sept 8 - Electronics and Books
 Nov 10 - Doc Shred, Paint

2019 Event Dates:
 Apr 13 - Electronics & Books
 May 11 - Electronics, Books, Doc Shred, Paint
 Jun 8 - Electronics, Books, Doc Shred
 Jul 13 - EXTRAVAGANZA
 Aug 10 - Electronics, Books, Doc Shred
 Sept 14 - Electronics, Books, Doc Shred, Paint
 Oct 12 - Electronics & Books
 Nov 9 - Electronics & Books

A-Z List of Items and Recycle Options

A-Z List of Items and Recycle Options	8-10
Batteries	5
Clean Wares for Kane	7
Compost or Compost Bin	7
Document Shredding	3
Drop-off - Electronics	3
Drop-off - Recycling Tied Scrap, Trash	6
Emuls	2
Fluorescent Lights	5
Household Hazardous Wares	4
Junk Mail	7
Lane Paint	2-3
Metalized Pharmaceuticals	6
Motor Oil	5
Household/Sharp Springs	5
Plastic Bags	12
Recycling Guidelines (for paper & cans)	11
Service Fees	7

YOU can help improve recycling!

Did you know that material placed in recycling carts in Illinois is actually made up of 25-35% garbage? As you can imagine, this causes a number of problems. It weighs down sorting facilities, reduces commodity prices, affects the remanufacturing markets, and increases costs for local governments and ultimately residents.

In 2018 a state task force was formed to bring recycling industry stakeholders together to develop straightforward recycling education materials to help residents better understand what items should be placed in recycling carts and what items should be kept out.

These new simplified guidelines can be found on page 11, with more detailed information on the Kane County Recycles webpage. Please follow these guidelines to help us preserve the integrity of the recycling system so as to recover and reuse as many of our valuable resources as possible.

Plastics are the most commonly misidentified items when it comes to recycling. First, the resin identification code number in the triangle does not mean that a plastic object is recyclable! As I always say, forget the numbers, and look at the shape! Plastic containers - bottles, tubs, jugs and jars - are the only plastic items you should place in your outside carts. Plastic bags (see p. 12) are recyclable but not in your carts!

Your commitment to recycling right has a real impact. Thank you for your efforts!

Sincerely, Jennifer Jankov, Kane County Recycling Coordinator

Municipal Waste & Recycling Haulers

Hauler	Contact	City or Township Service Area
Advanced Disposal Services	630-587-8282	Berwyn, Mill Creek S.S.A., Prosbury
DC Recycling Systems (a Lubebox Recycling service company)	815-758-7274	Sagey Grove, Montgomery, Virgil & Plano Townships
Flood Brothers Disposal Co	630-261-0578	East Dundee, Pingree Grove
Geot Industries	877-775-1200	Algonquin, Aurora, Big Rock, Burlington, Carpenterville, Sleepy Hollow, South Elgin, West Dundee, Elgin Township
Lakestate Recycling Systems	630-581-8050	Elburn, Geneva, St. Charles
M/D/C Environmental Services	815-568-7274	Gilberts, Huntley
Waste Management	800-966-8988	Elgin, Hampshire, Kaneville, Maple Park, North Aurora, Sun. City/ Del Webb, Campion Township

KaneCountyConnects.com



KCC Search
Search for ...

SUBSCRIBE TO BLOG VIA EMAIL

Enter your email address to subscribe to this blog and receive notifications of new posts by email.

Email Address

Subscribe

WEA

- Log in
- Entries RSS
- Comments RSS
- WordPress.org

KANE COUNTY OUTREACH
COMMUNITY SUPPORT



LET THE RAKING BEGIN! KANE COUNTY COMMUNITIES LEAF COLLECTION ROUNDUP 2018



ELECTRONICS, BOOKS RECYCLING EVENT SET FOR SATURDAY IN ST. CHARLES

September 5, 2018 - by kanecountyconnects - in Communities, Consumers, Education, Events, Government, Public Service, Quality of Life, Recycling, Sustainability, Taxpayers, WK-Communities



Kane County Connects is hosting a recycling event for electronics and books between Saturday, Sept. 8, 2018, at the Kane County Branch Court office at 540 N. St. Charles.

The event is across from the Kane County Fairgrounds, just north of IL Route 38 and south of Route 64.

The event is likely to be less than five minutes for this event, said Kane County Recycling Coordinator Jennifer Jarland.

The event is for electronics and books only. It will NOT include document recycling or paint recycling. The next shredding and paint event will be on Nov. 10.

The collection will include computers, laptops, stereos, DVD players, printers, keyboards, mice, phones, electronic games, holiday light strings and more — all of which can be recycled at no charge. Books are also free to drop off.



Sign up or submit an article!

Contact: Rick Nagel, KC Outreach Coordinator

Phone: 630-208-5133

Email: kanecountyconnects@gmail.com

Help spread the word

Share the info!

- Kane County Recycles Green Guide
- countyofkane.org/recycling
- Share Connects articles on social media
- Talk to family, friends, neighbors!



Home

Services

Solid Waste Plan

Sustainability Plan

A-Z List

Recycling Guidelines

Green Guide



Kane County Recycles
Phone: 630.208.3841
Fax: 630.208.3837
Email: recycle@countyofkane.org

Recycle

- [2018 Green Guide](#)
- [Cartelón del Guía de Reciclado \(Español\)](#)
- [A-Z Recycling List](#)
- [Agrichemical Containers](#)
- [Apartment & Condo Recycling](#)
- [Batteries](#)
- [Business Recycling](#)
- [Clothes, Shoes, Textiles](#)
- [Compost Bins](#)
- [Construction & Demolition Recycling](#)
- [Curbside Recycling](#)
- [Debris Management Guide](#)
- [Document Shredding](#)
- [Drop-offs](#)
- [ELECTRONICS RECYCLING](#)
- [Fluorescent Tubes and CFLs](#)
- [Hazardous Waste/Chemicals](#)
- [Junk Mail](#)

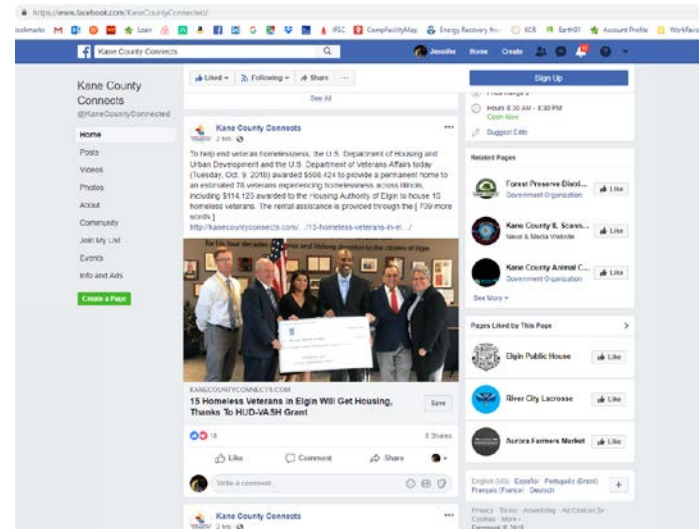
Sign up for the KCR email list

EVENTS

- [10/10/18 Recycling Presentation](#) by Jennifer Jarland, Kane County Recycling Coordinator
- [11/3/18 Kane County Pumpkin Composting Event](#)
- [11/10/18 Kane County Recycles Event: Electronics & Books + Paint & Document Shredding](#)
- [Electronics and Books Events](#)
- [Paint Recycling Events](#)
- [Document Shredding Events](#)

VIDEOS

Please enjoy these informative and entertaining videos created in partnership by Kane County Information Technology and Kane County Environmental Resources.



www.CountyofKane.org/Recycling

Questions?

Jennifer Jarland

630-208-3841

recycle@countyofkane.org